

MODEL 42

0.25% TEST GAUGES

Designed as a master reference for checking the accuracy of other pressure instruments.



SPECIFICATIONS:

Dial Size:	6"
Accuracy:	±0.25% FS - ANSI Grade 3A
Case:	304SS (Non-Fillable)
Bezel:	304SS Bayonet Lock Type
Socket:	316SS
Sensing Element:	316SS
Lens:	Laminated Safety Glass
Pointer:	Aluminum, Balanced, Light weight, Knife Edge
Dial:	Aluminum, Anti Parallax Mirror
Connection:	1/2" or 1/4" NPT, Lower or Lower Back
Range:	See Range Chart
Scales:	psi (metric available)
Safety Blowout Discs:	Standard
Protection Standard:	IP65 in accordance with NF EN 60529

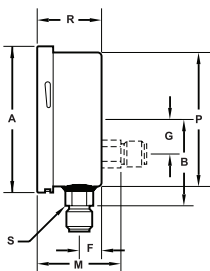
Estimated Shipping Weight	
DIAL SIZE	DRY
6"	2 lbs. 6 oz.

▶ AVAILABLE OPTIONS:

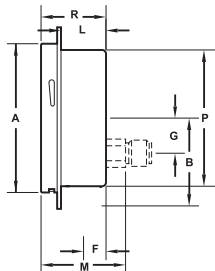
- Front Flange (back mount only)
- Back Flange
- Calibration Certificate
- Oxygen Cleaning

▶ AVAILABLE CASE STYLES AND DIMENSIONS:

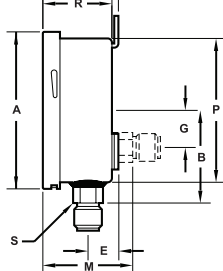
LOWER & BACK



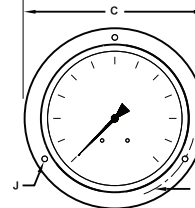
FRONT FLANGE



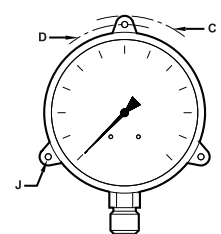
BACK FLANGE



FRONT FLANGE FRONT VIEW



BACK FLANGE FRONT VIEW



DIAL	A	B	C	D	E	F	G	J	K	L	M	P	R	S
6"	5.91" (150,2mm)	3.35" (85mm)	7.09" (180mm)	6.61" (168mm)	1.00" (25,4mm)	.91" (23mm)	1.24" (31,5mm)	0.22" (5,5mm)	2.22" (56,4mm)	1.55" (39,3mm)	2.70" (68,5mm)	5.59" (1,42mm)	2.15" (54,5mm)	0.87" (22mm)



Tel-Tru Manufacturing Company
 408 St. Paul Street, Rochester, New York 14605 USA
 Phone: 585.232.1440 • 800.232.5335 • Fax: 585.232.3857 • E-mail: info@teltru.com • Web: www.teltru.com

► TO ORDER:

To Build A Part Number: Select one code from each column to build your gauge.

DIAL	MODEL CODE	TUBE & SOCKET	CASE	CONN. SIZE	CONN. LOCATION	CONN. TYPE	RANGE & SCALE	OPTIONS
6"	60 42	S = 316SS	S = Stainless Steel	2 = 1/2" 4 = 1/4"	L = Lower B = Lower Back	1 = NPT 2 = BSPT 3 = BSP straight	See Range Chart	E = Back Flange F = Front Flange* R = Restrictor Oxygen Cleaning **

* Front Flange available on Back Mount only.

** Oxygen cleaning is sold separately. Order part number 10000006.

Example:

Specs: 6", Model 42S, 316SS, 1/2" Lower, NPT, 0-30 psi, Back Flange

Select:

60 42	S	S	2	L	1	C6A	E
-------	---	---	---	---	---	-----	---

Ordering Format: 6042SS2L1C6AE

► STANDARD RANGES:

CODE = RANGE (psi)	INTERVALS (Hg) (psi)	DIVISIONS (Hg) (psi)
V1K = 30" Hg	2"	.2"
Z2A = 30-0-30	10" 5	.1" .5

CODE = RANGE (psi)	INTERVALS (psi)	DIVISIONS (psi)
B7A = 0-15	3	.2
C6A = 0-30	2	.2
D6A = 0-60	5	.5
D9A = 0-100	10	.5
E4A = 0-160	10	1
E5A = 0-200	20	2
E8A = 0-300	20	2
F2A = 0-400	20	2
F4A = 0-600	50	5

CODE = RANGE (psi)	INTERVALS (psi)	DIVISIONS (psi)
F8A = 0-1000	100	5
H2A = 0-1500	100	10
H5A = 0-2000	100	10
H9A = 0-3000	200	20
J8A = 0-5000	500	50
K4A = 0-10,000	1000	50
K7A = 0-15,000	1000	100

NOTE: ABOVE 15,000 PSI AVAILABLE ONLY WITH 1/2" BSP STRAIGHT CONNECTION (G¹/₂).
NOTE: OTHER RANGES AND SCALES AVAILABLE. CONSULT FACTORY.