



MAP AND DIRECTIONS

G-S Plastic Optics & Tel-Tru Manufacturing Co.
408 St. Paul Street
Rochester, NY 14605

Directions from Greater Rochester International Airport

1. Exit Airport onto Brooks Avenue.
2. Take a Left onto I-390 North.
3. Take exit 20A to I-490 East.
4. Once on I-490 East you will need to get into the left-hand lane. Take exit 13 for the Inner Loop.
5. Take the first exit on the Inner Loop for St. Paul Street.
6. At the ramp traffic light, turn left onto St. Paul Street and continue north under the railroad underpass.
7. Go through the first traffic light (Ward St.), then turn right into the gated parking lot, which is just past the first brick building.
8. Press the button on the intercom to gain access to the parking lot.

Directions from the South

1. Travelling North on I-390 North, take exit 20A to I-490 East.
2. Once on I-490 East you will need to get into the left-hand lane. Take exit 13 for the Inner Loop.
3. Take the first exit on the Inner Loop for St. Paul Street.
4. At the ramp traffic light, turn left onto St. Paul Street and continue north under the railroad underpass.
5. Go through the first traffic light (Ward St.), then turn right into the gated parking lot, which is just past the first brick building.
6. Press the button on the intercom to gain access to the parking lot.

Directions from the West

1. Travelling on I-90 East, take exit 47 for I-490 East toward Leroy/Rochester.
2. Once you are within the city, get into the left-hand lane and take exit 13 for the inner-loop.
3. Take the first exit on the Inner Loop for St. Paul Street.
4. At the ramp traffic light, turn left onto St. Paul Street and continue north under the railroad underpass.
5. Go through the first traffic light (Ward St.), then turn right into the gated parking lot, which is just past the first brick building.
6. Press the button on the intercom to gain access to the parking lot.

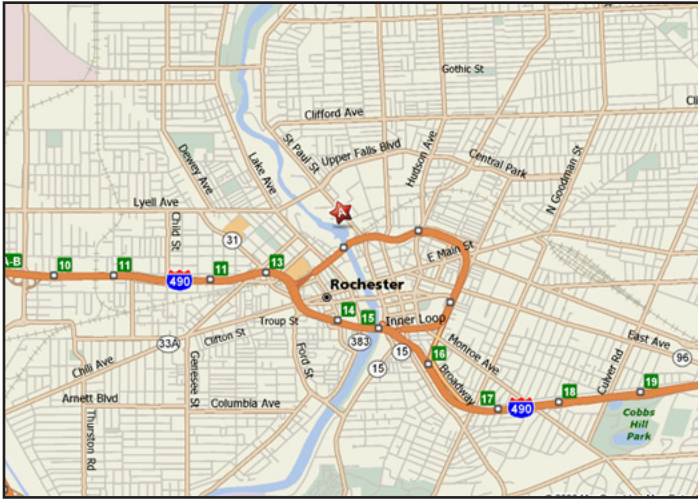
Directions from East

1. Take I-490 West towards Rochester.
2. Take exit 16 for Downtown/St. Paul/Clinton.
3. Stay on Clinton Avenue as you go through downtown Rochester.
4. Continue North on Clinton and go under the train underpass. Turn left at next intersection on to Ward Street.
5. Continue west on Ward past Emmett Street (on the right) and turn right onto Saint Paul St.
6. Turn right into the gated parking lot, which is just past the first brick building.
7. Press the button on the intercom to gain access to the parking lot.

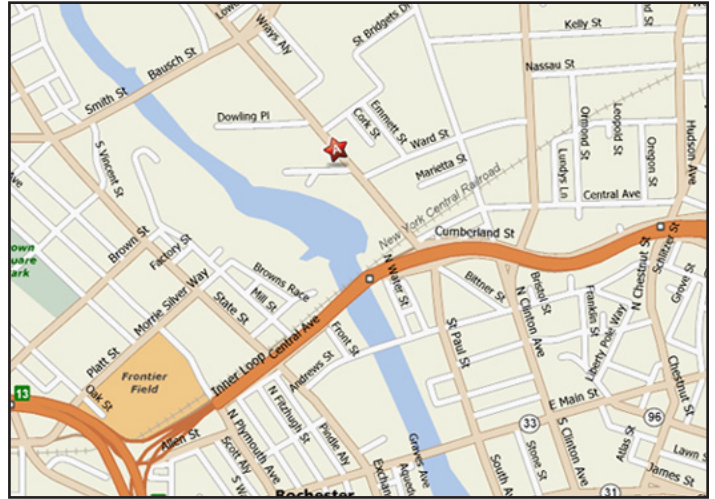
Once You Are Here

Once you have approached our parking area (using the gate between 392 and 408 St. Paul Street), you will need to push a red button on the console by that gate, and someone will answer, verify your arrival, and buzz you in. Upon entering the parking lot you will see a canopy on your left. Park near the canopy and enter the vestibule on the right side under the canopy. Your host will be there shortly to greet you.

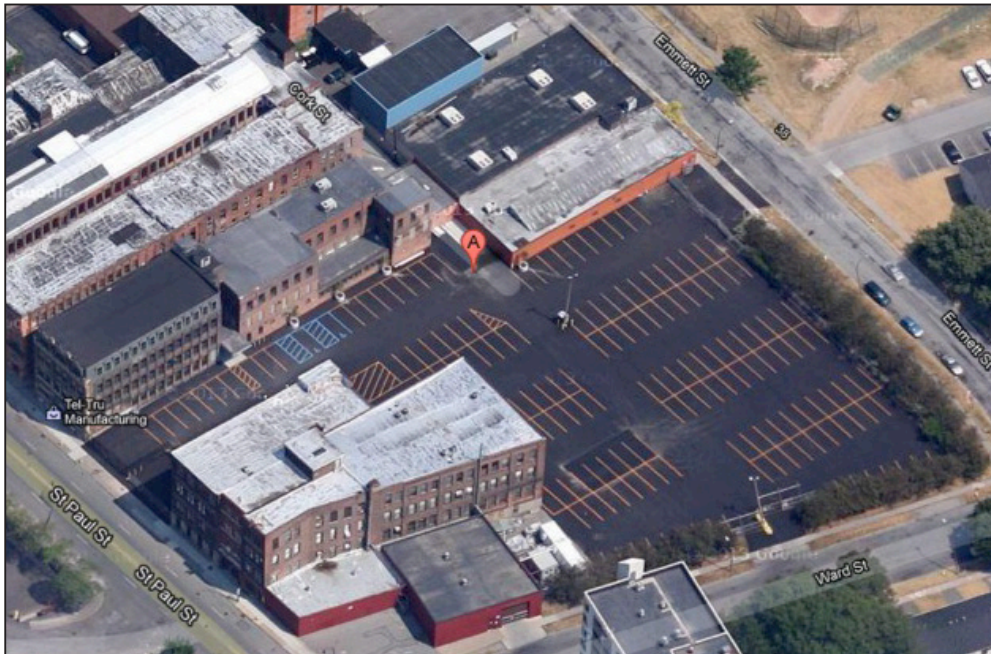
Area Map:



Map of G-S in downtown Rochester:



Germanow-Simon Campus





HOTEL ACCOMMODATIONS

Radisson Hotel Rochester Riverside

120 East Main St (1.0 mi)
Rochester, NY 14604
Tel: 585-546-6400
http://www.radisson.com/rochesterny_riverside

Hyatt Regency Rochester

125 East Main St (1.1 mi)
Rochester, NY, 14604
Tel: 585-546-1234
<http://rochester.hyatt.com>

Fairfield Inn Marriot

1200 Brooks Ave (6.1 mi)
Rochester, NY 14624
Tel: 585-529-5000
www.marriott.com/hotels/travel/rocfa-fairfield-inn-rochester-airport

The Strathallan

550 East Ave (1.6 mi)
Rochester, NY 14607
Tel: 585-461-5010
<http://www.strathallan.com>

Holiday Inn

911 Brooks Ave (6.3 mi)
Rochester, NY 14624
Tel: 585-328-6000
<http://www.hirochesterairport.com>

TRANSPORTATION

Enterprise Rent-A-Car

Rochester International Airport
1200 Brooks Ave
Rochester, NY 14624
Tel: 585-235-1449

Airport Taxi

7 McFarlin St
Rochester, NY 14605
Tel: 585-957-2470

Hertz

Rochester International Airport
1200 Brooks Ave
Rochester, NY 14624
Tel: 585-279-7420

Vanguard Taxi

84 University Ave
Rochester, NY 14605
Tel: 585-506-6996

RESTAURANTS

Dinosaur Bar-B-Que

Pit Smoked BBQ. Dine-In/Take-out \$\$
99 Court Street
Rochester, NY 14604
Tel: 585-325-7090

Max of Eastman Place

Seafood, International, American \$\$\$\$
25 Gibbs St
Rochester, NY 14604
Tel: 585-697-0491

Good Luck

American, Tapas, Italian \$\$\$
50 Anderson Avenue
Rochester, NY 14607
Tel: 585-340-6161

Jines

Greek, American (Traditional), Mediterranean \$\$
658 Park Avenue
Rochester, NY 14607
Tel: 585-461-1280

Tapas 177

Tapas \$\$\$
177 Saint Paul Street
Rochester, NY 14604
Tel: 585-262-2090

The Frog Pond

Breakfast/Brunch, American, Burgers \$\$
652 Park Ave
Rochester, NY 14607
Tel: 585-271-1970