

GENERAL INFORMATION

- For accurate reading, thermometer must be immersed at least one inch into an agitated liquid or certified reference device.
- The battery has an expected service life of 8 years.
- Certificate of calibration available for additional fee.
- For more information on thermometer testing see www.teltru.com/topic/techbrief_TB719

CAUTION

- Any severe shock to the thermometer, dropping, bending of the stem or head, etc., can possibly impair its accuracy.
- When installing thermometer into threaded connection, always tighten with wrench on hex nut (NEVER use the head of the thermometer for tightening).



TEL-TRU
MANUFACTURING CO.

Temperature + Pressure Instruments

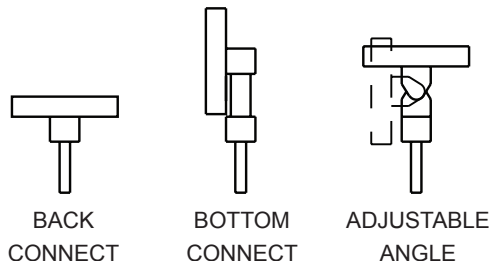
Tel-Tru Manufacturing Company

408 St. Paul Street, Rochester, New York 14605 USA

Phone: 585.232.1440 • 800.232.5335

E-mail: info@teltru.com • Web: www.teltru.com

DIGI-TRU™ THERMOMETERS Operating and Verification Instructions



1204037

www.teltru.com

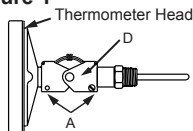
SPECIFICATIONS:

Env. Protection:	Splash proof
Operating Temp. Range:	-67°F to 302°F (-55°C to 150°C)
Ambient Temp. Range:	20°F to 120°F (-7°C to 49°C)
Battery:	8 year life
Warranty:	2 years from shipment
Accuracy:	±0.1 °F/C (maximum) from -4°F to 122°F (-20°C to 50°C)
Display Resolution:	0.1°F/C
Refresh Rate:	1 second

INSTRUCTIONS FOR REPOSITIONING AND INSTALLING ADJUSTABLE ANGLE THERMOMETERS

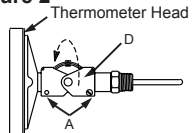
Thermometer head orientation can be adjusted by rotating the harness assembly up to 360°.

Figure 1



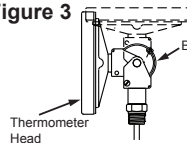
Thermometer head orientation can be adjusted **ONLY** when in the straight, back-connected position as shown in Figure 1. Loosen two screws (A) until harness (D) revolves freely.

Figure 2



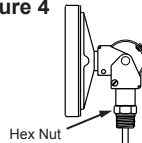
Hold thermometer head and harness (D), rotate harness to desired position as shown in Figure 2. Tighten two screws (A) until harness (D) is secure.

Figure 3



To tilt thermometer head up to 90° angle, loosen single screw (B) **1/2 turn ONLY**. Tilt to desired angle and tighten screw (B) as shown in Figure 3.

Figure 4



To install thermometer into threaded connection, always tighten with wrench on hex nut as shown in Figure 4.

CAUTION: NEVER use head of thermometer or adjustment harness as a handle for tightening, **SEVERE DAMAGE** to thermometer will result.